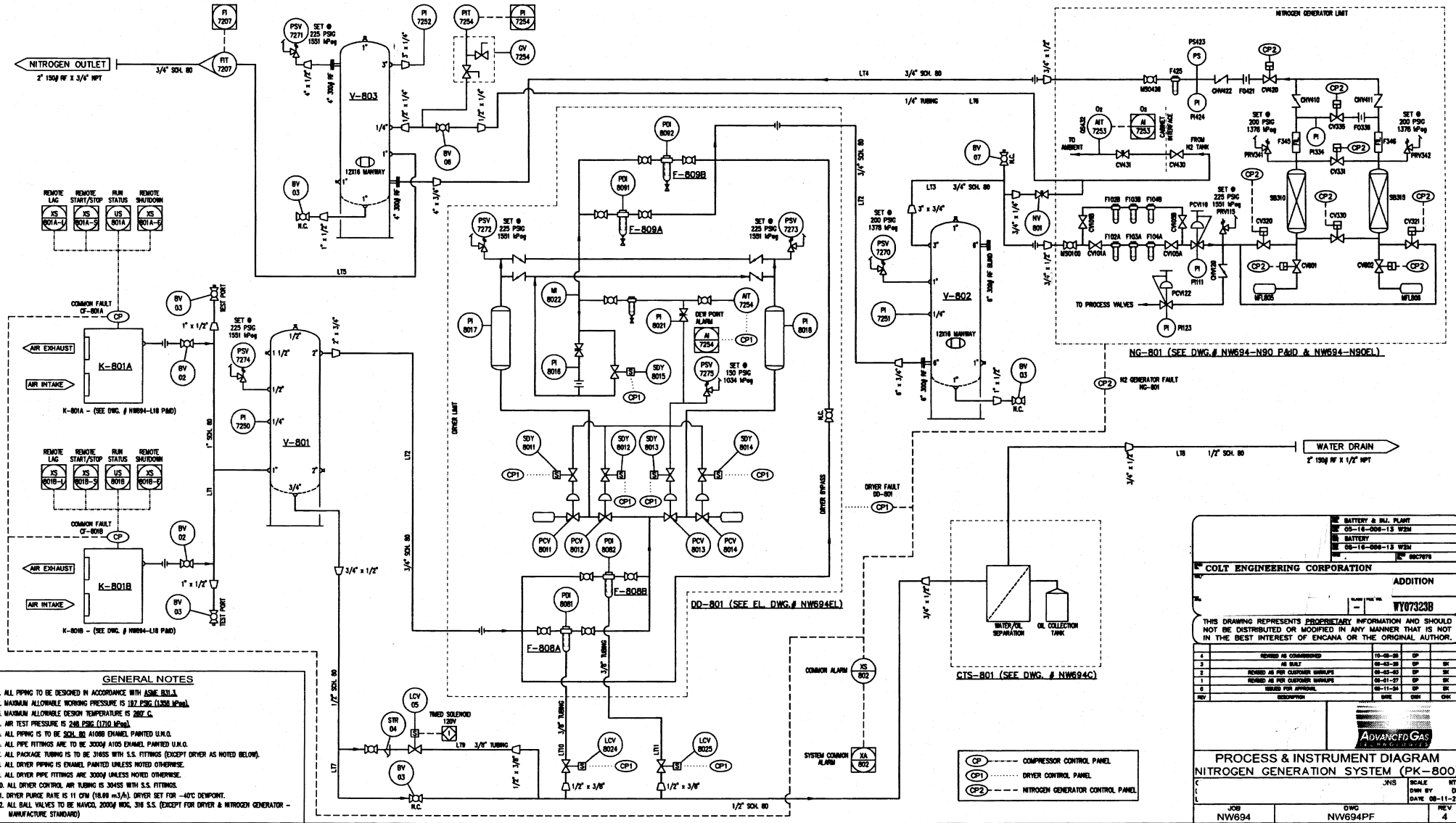


- K-801A/B AIR COMPRESSOR**  
COMPAR L18  
75 SCFM (127 Sm<sup>3</sup>/h) @ 180 PSIG (1310 kPa)  
197 PSIG (1358 kPa) MAMP  
c/w 25 HP MOTOR  
1760 RPM 480V/3PH/60HZ  
S/N (A): 10001410/0011  
S/N (B): 349015/7492
- DD-801 HEATLESS AIR DRYER**  
ARTEK T730-3 ED  
120V/1W/60 HZ  
250 PSIG (1724 kPa) MAMP  
YEAR BUILT: 2008  
S/N: 090100037  
CRN: A6171.3
- V-801 VERTICAL WET AIR RECEIVER**  
MANCHESTER 302422  
300 PSIG (2068 kPa) MAMP, -28°C TO 204°C  
120 GAL.(4.5m<sup>3</sup>), 24" x 87' LG.  
YEAR BUILT: 2008  
S/N: 224751  
CRN: F1166.1C
- V-802 VERTICAL DRY AIR RECEIVER**  
STEEL FAB A10132  
250 PSIG (1724 kPa) MAMP, -28°C TO 204°C  
1060 GAL.(4.0m<sup>3</sup>), 48" x 144' LG.  
YEAR BUILT: 2008  
S/N: 532589  
CRN: A6138.3
- NG-801 NITROGEN GENERATION UNIT**  
ON SITE GAS N-80  
PEA TYPE  
18 SCFM (30 Sm<sup>3</sup>/h) @ 145 PSIG (1000 kPa)  
200 PSIG (1378 kPa) MAMP  
90% PURITY @ O2/LET  
YEAR BUILT: 2009  
S/N: 5279  
CRN: F1144.1C
- V-803 VERTICAL N2 AIR RECEIVER**  
STEEL FAB A10131  
250 PSIG (1724 kPa) MAMP, -28°C TO 204°C  
860 GAL.(2.5m<sup>3</sup>), 42" x 120' LG.  
YEAR BUILT: 2008  
S/N: 352581  
CRN: L4320.5123
- CTS-801 CONDENSATE TREATMENT SYSTEM**  
DOMINICK HUNTER ES2150  
232 PSIG (1600 kPa) MAMP  
CAP: 75 LITRES  
TEMP. MIN/MAX: 5°C TO 35°C  
YEAR BUILT: 2008  
S/N: 02 533 851
- F-808A/B PRE-FILTER**  
ARTEK COALESCER JC008S-C  
80 SCFM (228 Sm<sup>3</sup>/h) @ 100 PSIG (689 kPa)  
500 PSIG (3447 kPa) MAMP  
0.01 MICRON FILTER  
c/w AUTO DRAIN  
CRN: 0E3834.2C
- F-809A/B AFTER FILTER**  
ARTEK PARTICULATE JC009S-F  
133 SCFM (228 Sm<sup>3</sup>/h) @ 100 PSIG (689 kPa)  
500 PSIG (3447 kPa) MAMP  
0.9 MICRON FILTER  
MANUAL DRAIN  
CRN: 0E3834.2C



- GENERAL NOTES**
1. ALL PIPING TO BE DESIGNED IN ACCORDANCE WITH ASME B31.1.
  2. MAXIMUM ALLOWABLE WORKING PRESSURE IS 112 PSIG (7.73 MPa).
  3. MAXIMUM ALLOWABLE DESIGN TEMPERATURE IS 204°C.
  4. AIR TEST PRESSURE IS 248 PSIG (17.2 MPa).
  5. ALL PIPING IS TO BE SCH. 40, A106B ENAMEL PAINTED U.L.O.
  6. ALL PIPE FITTINGS ARE TO BE 3000Y A105 ENAMEL PAINTED U.L.O.
  7. ALL PACKAGE TUBING IS TO BE 316SS WITH S.S. FITTINGS (EXCEPT DRYER AS NOTED OTHERWISE).
  8. ALL DRYER PIPING IS ENAMEL PAINTED UNLESS NOTED OTHERWISE.
  9. ALL DRYER PIPE FITTINGS ARE 3000Y UNLESS NOTED OTHERWISE.
  10. ALL DRYER CONTROL AIR TUBING IS 304SS WITH S.S. FITTINGS.
  11. DRYER PURGE RATE IS 11 CFM (0.69 m<sup>3</sup>/A). DRYER SET FOR -40°C DEWPOINT.
  12. ALL BALL VALVES TO BE HANCOX, 2000Y WOG, 316 S.S. (EXCEPT FOR DRYER & NITROGEN GENERATOR - MANUFACTURE STANDARD).

**COLT ENGINEERING CORPORATION**

**ADDITION**

DATE: 08-11-24  
BY: JNS  
SCALE: N/A  
PK: WY07323B

THIS DRAWING REPRESENTS PROPRIETARY INFORMATION AND SHOULD NOT BE DISTRIBUTED OR MODIFIED IN ANY MANNER THAT IS NOT IN THE BEST INTEREST OF ENCANA OR THE ORIGINAL AUTHOR.

NO.	REVISION	DATE	BY	CHK
1	ISSUED AS COMPLETED	15-03-09	CP	
2	AS BUILT	09-03-09	CP	SP
3	REVISION AS PER CUSTOMER CHANGES	09-03-09	CP	SP
4	REVISION AS PER CUSTOMER CHANGES	09-01-07	CP	SP
5	REVISION FOR APPROVAL	08-11-24	CP	SP
6	REVISION	DATE	BY	CHK

**Advanced Gas**

**PROCESS & INSTRUMENT DIAGRAM**  
**NITROGEN GENERATION SYSTEM (PK-800)**

JNS  
SCALE: N/A  
DATE: 08-11-24

JOB: NV694  
DWG: NV694PF  
REV: 4